

**Roswell Park Cancer Institute has told
24 skilled cancer researchers they can no longer afford them.
That's 400 years of cancer research experience out the door.**

Here's 24 salaries they've decided they can afford!



Trump, Donald L.
Esq.
\$548,990
President and CEO



Johnson, Candace S.
PhD
\$424,008
Deputy Director,
Roswell Park Cancer Institute



Smith, Judy L.
MD, FACS
\$373,880
Medical Director
Associate Professor of Oncology
Clinical Associate Professor of Surgery



Walker, Jeff A.
MBA
\$316,342
Executive Vice President



McDonald, Gregory A.
CHFP, CPA
\$304,954
Vice President of Finance
Chief Financial Officer



Sexton, Michael B.
Esq.
\$286,208
General Counsel
Chief Institute Operations Officer



Hohn, David Christian
MD
\$249,990
President Emeritus
Executive Director of Health Policy



Krowinski, Rochelle L.
RN, MPH, FACHE
\$224,406
Chief Operating Officer
Clinical Services & Regional Affiliations



DiBrog, Laurel A.
\$222,612
Vice President
Marketing, Planning & Public Affairs



Ruh, JoAnne
\$220,012
Vice President,
Information Systems



Yasko, Joyce M.
PhD
\$213,798
Vice President, Clinical Research
Administration and Services



Michalek, Arthur, M.
PhD
\$197,314
Chairman, Department of Educational
Affairs Research Integrity Officer



Kelly, Maureen
RN, MS
\$190,788
Vice President, Patient Care Services,
Chief Nursing Officer



Wicher, Camille P.
Esq., RN, MSN
\$175,006
Vice President of Corporate Ethics
and Research Subject Protection



Jenkins, Dana
MS
\$170,794
Assistant Vice President of
Organizational Performance Improvement



Gruber, Marcia
RN, MSN, MS, MS
\$169,390
Vice President Therapeutic Services
& Patient Access



Germain, Pamela
MBA
\$156,806
Vice President
Managed Care and Outreach



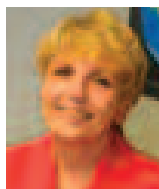
Matner, Richard
PhD, MBA
\$152,880
Director of Technology and
Commercial Development



Adams, Jonathan
PharmD
\$151,060
Assistant Vice President & Chief
of Pharmacy Services



Damiani, Lisa A.
\$147,004
Executive Director for
Governmental Affairs



Schwartz, Cynthia A.
\$144,196
Executive Director Office of
Corporate Projects & Initiatives



Hanley, Marianne E.
Esq.
\$140,010
Assistant Vice President for Risk
Management/Corporate Compliance



Garcia, Vicki
\$117,416
Director of Employment
and Testing



Clark, Reggie
MA
\$80,990
Director of Diversity

**Tell Roswell Park Administrators to put research
first and reinstate the staff of research associates.
Call (716) 845-2300 and ask for Donald Trump.**



**New York State
Public Employees Federation, AFL- CIO**
Representing 59,000 professional, scientific, and technical employees
Kenneth Brynien
President
Arlea Igoe
Secretary-Treasurer